

SONY

HDC-P50 Multi-Purpose Camera



SUPER MOTION

4K

Sony proudly introduces to its lineup a point-of-view (POV)-style 4K camera, the HDC-P50, to increase your creativity, boost performance, and add flexibility while maintaining interchangeability with existing models.

The HDC-P50 is a highly compact POV-style multi-purpose camera based on Sony's sophisticated core technologies and equipped with the latest three 2/3-inch 4K CMOSs with Global Shutter.

The HDC-P50 offers shooting flexibility from almost anywhere and delivers high-quality 4K pictures as a standalone camera or system camera integrating seamlessly with the HDC-4300 and HDC-3500 Series. Precise adjustment of camera parameters can also be achieved with the remote control panel (RCP) and master setup unit (MSU) developed for Sony's HDC Series system cameras.

The compact and lightweight HDC-P50 is an ideal POV camera for a wide range of uses including unmanned studio robotics cameras, wireless applications with a Steadicam, and deployment at stadiums, gymnasiums, and other sporting events.

Features

Compact Design with High Picture Quality

Packed in a highly slim and compact body of only about 112 mm (4 1/2 inches) in width and weighing around 2.4 kg (5 lb 4.7 oz) excluding a lens, the HDC-P50 is equipped with three superb 2/3-inch 4K CMOSs with Global Shutter and Sony-developed digital processing LSI, achieving high picture quality equivalent to that of reputable HDC Series cameras.

The HDC-P50 is ideal for use in space-limited areas such as camera crane jibs, helicopter camera mounts, and stereoscopic 3D camera rigs.



Dual Optical Servo Filters

The HDC-P50 is equipped with Neutral Density (ND) and Color Correction (CC) optical servo filter units, which can be remotely controlled according to lighting condition changes from a remote control panel (RCP) or a master setup unit (MSU).

HD 6x Super Slow Motion

The HDC-P50 captures HD(1080P) images up to 6x super slow motion with an optional software upgrade. This provides an amazing maximum frame rate of 359.64 fps (60 Hz) or 300 fps (50 Hz), allowing you to create sensational super-slow-motion sequences of key moments in a game or event.

Multi-Format Operation

This camera supports a wide range of capturing formats such as 1080/59.94i, 1080/50i, 1080/59.94p*¹, 1080/50p*¹, 720/59.94p, 720/50p, 1080/23.98PsF*², 24PsF*², 25PsF*², and 29.97PsF*².

*¹ Optional HZC-PRV50 software is required.

*² Optional HZC-PSF50 software is required.

Master Setup Unit and Remote Control Panel

You can use the MSU-1000/MSU-1500 Master Setup Unit (MSU) and RCP-1000 Series Remote Control Panel (RCP) developed to adjust HDC-P50 camera parameters.



MSU-1000 Master Setup Unit



MSU-1500
Master Setup Unit



RCP-1000
Remote Control Panel

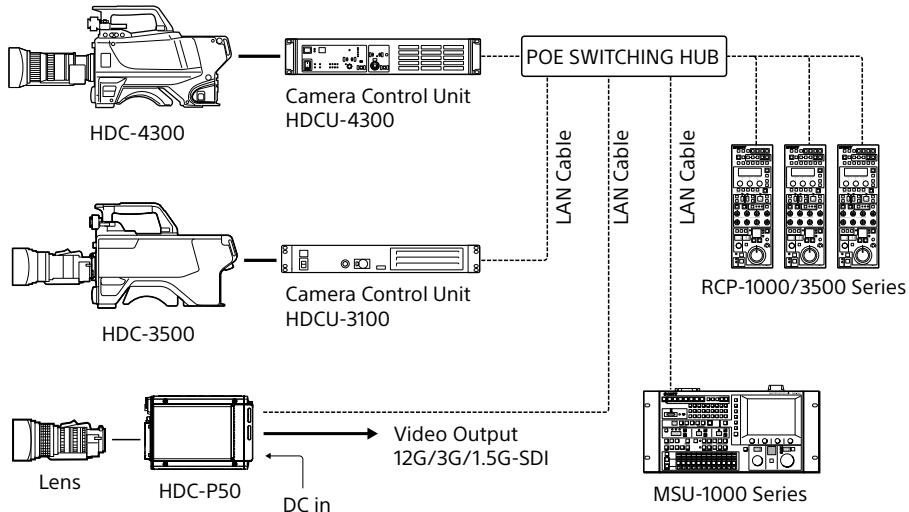


RCP-1001
Remote Control Panel



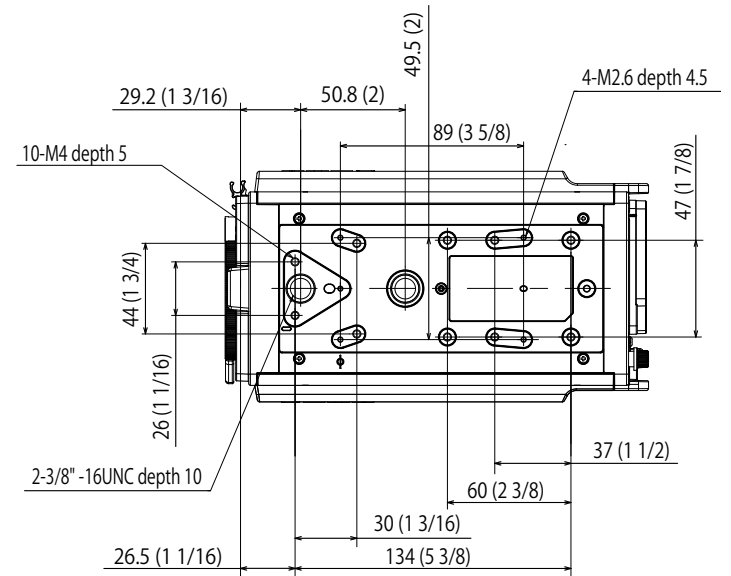
RCP-3500
Remote Control Panel

System Configuration (LAN connection)

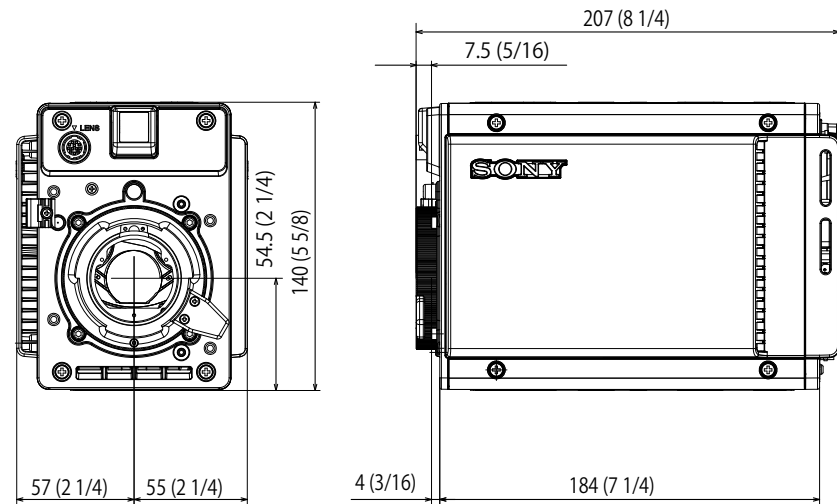


Dimensions

Unit: mm (inches)



Rear View



Specifications

General	
Power requirements	DC 10.5 V to 17 V, 8.2 A (max.)
Operating temperature	-20°C to +45°C (-4°F to +113°F)
Storage temperature	-20°C to +60°C (-4°F to +140°F)
Mass	2.4 kg (5 lb 4.7 oz)
Camera section	
Imager	3-chip 2/3-inch type 4K CMOS with global shutter
Effective resolution (H x V)	QFHD: 3840 × 2160*1 HD: 1920 × 1080
Signal format	1080/50i, 1080/59.94i, 720/50p, 720/59.94p (1080/23.98PsF, 1080/24PsF, 1080/25PsF, 1080/29.97PsF, 50/59.94p, 4K/50p, 4K/59.94p: option)
Spectrum system	F1.4 prism
Lens mount	Sony bayonet mount
Built-in filters	ND: 1: CLEAR, 2: 1/4ND, 3: 1/8ND, 4: 1/16ND, 5: 1/64ND CC: A: CROSS, B: 3200K, C: 4300K, D: 6300K
Sensitivity (at 2000 lx, 3200K, 89.9% reflectance)	F10 (at 1080/59.94p, 720/59.94p), F11 (at 1080/50p, 720/50p)
Noise level	-62 dB
Horizontal resolution	2,000 TV lines (at center)
Shutter speed	1/100, 1/125, 1/250, 1/500, 1/1000, 1/2000 sec (1080/59.94i) 1/60, 1/125, 1/250, 1/500, 1/1000, 1/2000 sec (1080/50i)
Inputs/Outputs	
Genlock input	BNC (x1) HD: SMPTE 274M, tri-level sync, 0.6 Vp-p, 75 Ω SD: Black burst (NTSC: 0.286 Vp-p, 75 Ω/PAL: 0.3 Vp-p, 75 Ω)
SDI 1 output	BNC (x1), 12G/3G/1.5G-SDI
SDI 2 output	BNC (x1), 12G/3G/1.5G-SDI
SDI 3 output	BNC (x1), 3G/1.5G-SDI
SDI 4 output	BNC (x1), 3G/1.5G-SDI
SDI MONI	BNC (x1), HD-SDI
EXT I/O	D-sub 15-pin (female) (x1)
Remote	8-pin (x1)
Lens	12-pin (x1)
LAN	RJ-45 (x1), 10BASE-T, 100BASE-TX
Supplied accessories	
Tally number plate (1set), CD-ROM (1)	

*1 Options are required. Please contact your nearest Sony sales office.

Optional Accessories

- MSU-1000/MSU-1500 (Master Setup Unit)
- RCP-1000/RCP-3500 series (Remote Control Unit)
- HZC-UHD50 (Operating software for 4K/59.94p and 4K/50p)
- HZC-PRV50 (Operating software for 1080/59.94p and 1080/50p)
- HZC-PSF50 (Operating software for 1080/23.98PsF, 24PsF, 25PsF, and 29.97PsF)
- HZC-HFR50(Operating software for 1080/2x, 3x, 4x, 6x)

Distributed by

©2019 Sony Imaging Products & Solutions Inc. All rights reserved.
 Reproduction in whole or in part without written permission is prohibited.
 Features and specifications are subject to change without notice.
 The values for mass and dimension are approximate.
 "SONY" is a registered trademark of Sony Corporation.
 All other trademarks are the property of their respective owners.
 Please visit Sony's professional website or contact your Sony representative
 for specific models available in your region.